



COMPASS

Queens Luxury Report

Jan 19 - 25, 2026, Residential Contracts \$1.25M+

Photo: 21-10 44th Drive, Unit PHA

The Queens luxury real estate market, defined as all properties priced \$1.25M and above, saw 11 contracts signed this week, made up of 5 condos, and 6 houses. The previous week saw 11 deals. For more information or data, please reach out to a Compass agent.

\$1,643,923

Average Asking Price

\$1,555,000

Median Asking Price

\$1,176

Average PPSF

2%

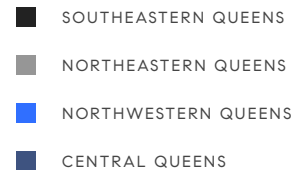
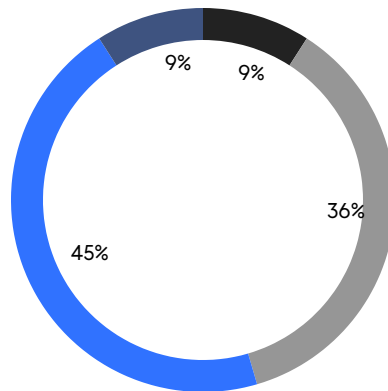
Average Discount

\$18,083,150

Total Volume

180

Average Days On Market



5

Condo Deal(s)

0

Co-op Deal(s)

6

Single-Family Deal(s)

\$1,608,430

Average Asking Price

\$0

Average Asking Price

\$1,673,500

Average Asking Price

\$1,555,000

Median Asking Price

\$0

Median Asking Price

\$1,554,000

Median Asking Price

\$1,631

Average PPSF

\$796

Average PPSF

981

Average SqFt

2,196

Average SqFt

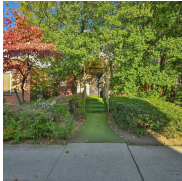


181-23 Henley Road

Jamaica Estates

Contract Signed

Type	House	Price	\$2,300,000	Sq. Ft.	2,752	Beds	5
DOM	8	Initial	\$2,300,000	PPSF	\$836	Baths	4



147-01 70th Avenue

Kew Gardens Hills

Contract Signed

Type	House	Price	\$2,100,000	Sq. Ft.	2,056	Beds	5
DOM	80	Initial	\$2,500,000	PPSF	\$1,022	Baths	3



11-36 45th Road, Unit 405A

Long Island City

Contract Signed

Type	Condo	Price	\$1,985,000	Sq. Ft.	1,135	Beds	3
DOM	275	Initial	\$1,980,000	PPSF	\$1,749	Baths	2



11-36 45th Road, Unit 205A

Long Island City

Contract Signed

Type	Condo	Price	\$1,935,000	Sq. Ft.	1,135	Beds	3
DOM	2	Initial	\$1,935,000	PPSF	\$1,705	Baths	2



183-19 69th Avenue

Fresh Meadows

Contract Signed

Type	House	Price	\$1,648,000	Sq. Ft.	2,146	Beds	3
DOM	181	Initial	\$1,699,000	PPSF	\$768	Baths	4



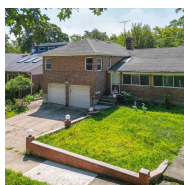
11-36 45th Road, Unit 402A

Long Island City

Contract Signed

Type	Condo	Price	\$1,555,000	Sq. Ft.	875	Beds	2
DOM	49	Initial	\$1,555,000	PPSF	\$1,778	Baths	2

Compass is a licensed real estate broker and abides by Equal Housing Opportunity laws. All material presented herein is intended for informational purposes only. Information is compiled from sources deemed reliable but is subject to errors, omissions, changes in price, condition, sale, or withdrawal without notice. No statement is made as to the accuracy of any description. All measurements and square footages are approximate. This is not intended to solicit property already listed. Nothing herein shall be construed as legal, accounting or other professional advice outside the realm of real estate brokerage.

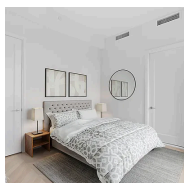


222-60 Birmington Parkway

Bayside

Contract Signed

Type	House	Price	\$1,460,000	Sq. Ft.	2,430	Beds	4
DOM	153	Initial	\$1,460,000	PPSF	\$601	Baths	3

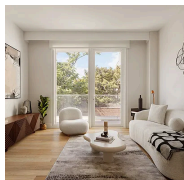


29-18 41st Avenue, Unit 2D

Long Island City

Contract Signed

Type	Condo	Price	\$1,299,000	Sq. Ft.	868	Beds	2
DOM	304	Initial	\$1,380,000	PPSF	\$1,497	Baths	2



37-34 33rd Street, Unit 4K

Astoria

Contract Signed

Type	Condo	Price	\$1,268,150	Sq. Ft.	890	Beds	2
DOM	631	Initial	\$1,208,150	PPSF	\$1,425	Baths	2



30-27 Murray Lane

Flushing

Contract Signed

Type	House	Price	\$1,268,000	Sq. Ft.	1,200	Beds	4
DOM	187	Initial	\$1,399,000	PPSF	\$1,057	Baths	3



124-01 Hillside Avenue

Kew Gardens

Contract Signed

Type	House	Price	\$1,265,000	Sq. Ft.	2,592	Beds	5
DOM	107	Initial	\$1,265,000	PPSF	\$489	Baths	3

Compass is a licensed real estate broker and abides by Equal Housing Opportunity laws. All material presented herein is intended for informational purposes only. Information is compiled from sources deemed reliable but is subject to errors, omissions, changes in price, condition, sale, or withdrawal without notice. No statement is made as to the accuracy of any description. All measurements and square footages are approximate. This is not intended to solicit property already listed. Nothing herein shall be construed as legal, accounting or other professional advice outside the realm of real estate brokerage.